

# OTDR Report (1310 nm (9 μm))

## General Information

File name:	89_1310.trc	Customer:	ADNOC
Test date:	14-Feb-24	Company:	PAN ARABIA
Test time:	3:00 PM	Fiber ID:	89
Cable ID:	FAR3 to FAR0 1A (B-A)		
Job ID:	0500831		
Comments:	END TO END TEST		

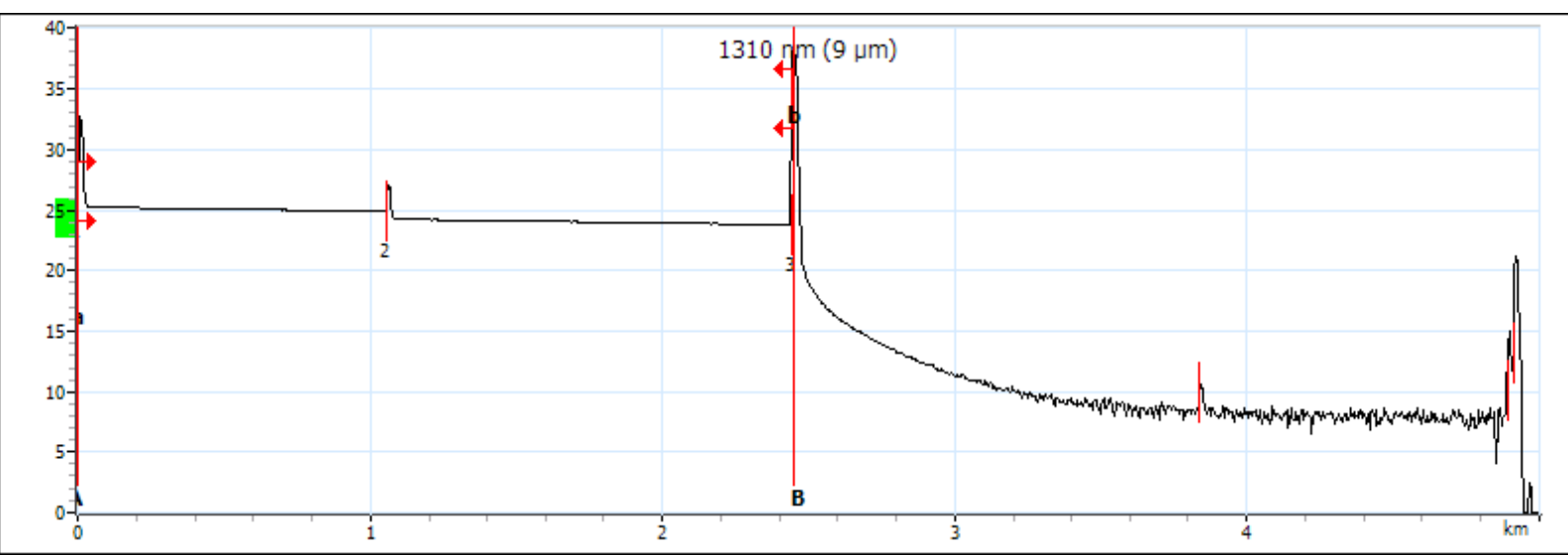
## Locations

	Location A	Location B
Location	FAR3	FAR0
Operator	PANDA	HABEEB
Model	MAX-720C-Q1-EA-EI	
Serial number	1206159	
Calibration date	29-Mar-23 (UTC)	

## Results

Span length:	2.4435 km	Average loss:	0.604 dB/km	Injection level:	25.2 dB
Span loss:	1.476 dB	Average splice loss:	---		
Span ORL:	37.11 dB	Maximum splice loss:	---		

## Graph



## Markers

Marker	Position (km)	Value (dB)	A-B LSA attenuation:	0.767 dB/km	A-B average loss:	-6.797 dB/km
a	0.0000	25.449	A-B LSA loss:	1.878 dB	4-point Event Loss:	-17.513 dB
A	0.0000	25.449	A-B ORL:	<29.57 dB	Maximum reflectance:	> -25.6 dB
B	2.4505	42.104				
b	2.4505	42.104				

# OTDR Report (1310 nm (9 μm))

## Event Table

Type	No.	Pos./Length (km)	Loss (dB)	Reflectance (dB)	Attenuation (dB/km)	Cumulative (dB)
First Connector	1	0.0000	---	-44.2		0.000
Section		1.0564	0.360		0.341	0.360
Reflective	2	1.0564	0.634	-56.4		0.994
Section		1.3871	0.482		0.347	1.476
Reflective	3	2.4435	---	> -22.5		1.476
Section		1.3954	---		---	---
Reflective		3.8388	---	-55.9		---
Section		1.0519	---		---	---
Merged Events		4.8908	---	-31.9		---

## Macrobend

Position (km)	Delta Loss (dB)

## Pass/Fail Thresholds

	1310 nm (9 μm)

## Test Parameters

	A → B
Wavelength (nm)	1310 nm (9 μm)
Range (km)	5.0000
Pulse (ns)	100
Duration (s)	5

## Test Settings

	A → B	Macrobend Wavelengths	Macrobend Delta Loss (dB)
IOR	1.467700		
Backscatter (dB)	-79.45		
Helix factor (%)	0.00		
Splice loss detection threshold (dB)	0.020		
Reflectance detection threshold (dB)	-72.0		
End-of-fiber detection threshold (dB)	5.000		

# OTDR Report (1550 nm (9 μm))

## General Information

File name:	89_1550.trc	Customer:	ADNOC
Test date:	14-Feb-24	Company:	PAN ARABIA
Test time:	3:00 PM	Fiber ID:	89
Cable ID:	FAR3 to FAR0 1A (B-A)		
Job ID:	0500831		
Comments:	END TO END TEST		

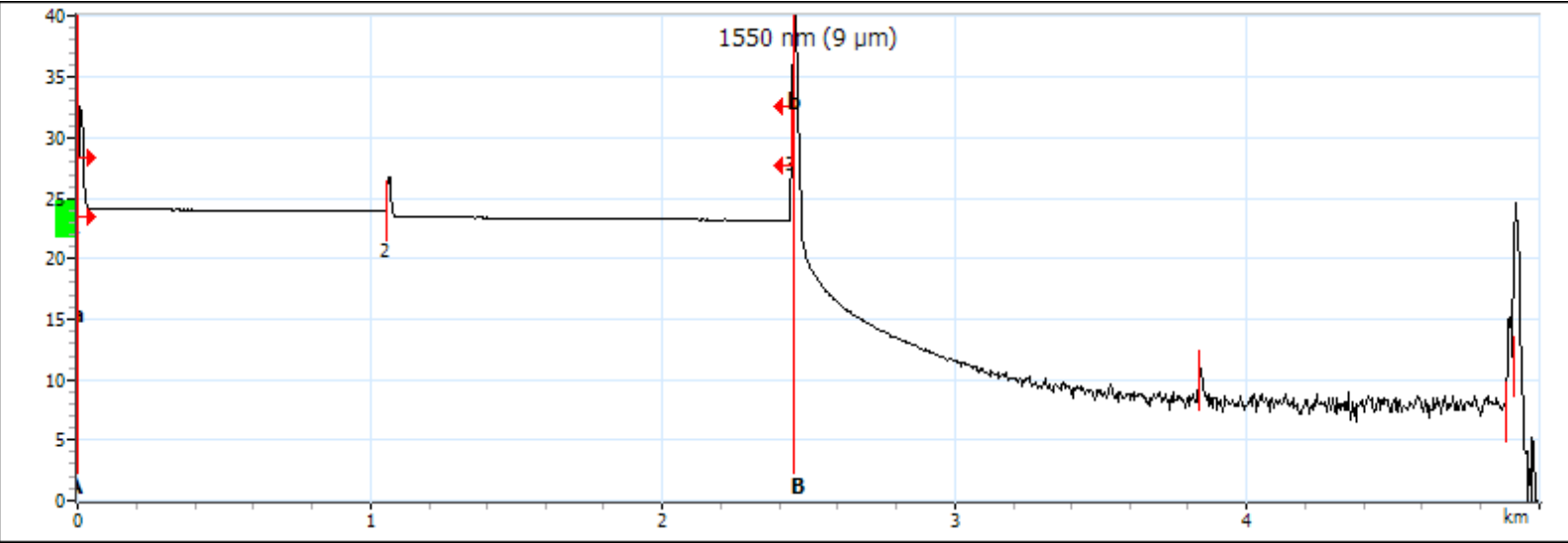
## Locations

	Location A	Location B
Location	FAR3	FAR0
Operator	PANDA	HABEEB
Model	MAX-720C-Q1-EA-EI	
Serial number	1206159	
Calibration date	29-Mar-23 (UTC)	

## Results

Span length:	2.4437 km	Average loss:	0.388 dB/km	Injection level:	24.1 dB
Span loss:	0.947 dB	Average splice loss:	---		
Span ORL:	39.02 dB	Maximum splice loss:	---		

## Graph



## Markers

Marker	Position (km)	Value (dB)	A-B LSA attenuation:	0.531 dB/km	A-B average loss:	-7.177 dB/km
a	0.0000	24.671	A-B LSA loss:	1.301 dB	4-point Event Loss:	-18.077 dB
A	0.0000	24.671	A-B ORL:	<29.65 dB	Maximum reflectance:	>-25.4 dB
B	2.4505	42.258				
b	2.4505	42.258				

# OTDR Report (1550 nm (9 μm))

## Event Table

Type	No.	Pos./Length (km)	Loss (dB)	Reflectance (dB)	Attenuation (dB/km)	Cumulative (dB)
First Connector	1	0.0000	---	-44.5		0.000
Section		1.0566	0.200		0.189	0.200
Reflective	2	1.0566	0.452	-56.7		0.652
Section		1.3871	0.295		0.213	0.947
Reflective	3	2.4437	---	> -23.4		0.947
Section		1.3928	---		---	---
Reflective		3.8365	---	-56.9		---
Section		1.0528	---		---	---
Merged Events		4.8893	---	-27.9		---

## Macrobend

Position (km)	Delta Loss (dB)

## Pass/Fail Thresholds

	1550 nm (9 μm)

## Test Parameters

	A → B
Wavelength (nm)	1550 nm (9 μm)
Range (km)	5.0000
Pulse (ns)	100
Duration (s)	5

## Test Settings

	A → B	Macrobend Wavelengths	Macrobend Delta Loss (dB)
IOR	1.468325		
Backscatter (dB)	-81.87		
Helix factor (%)	0.00		
Splice loss detection threshold (dB)	0.020		
Reflectance detection threshold (dB)	-72.0		
End-of-fiber detection threshold (dB)	5.000		